

Fusion menu

Fusion Menu is a menu theme of the **RokNavMenu** extension, the addon that drives all RocketTheme template menus. It is primarily a javascript enhanced CSS dropdown menu, that combines standard suckerfish type functionality with animations, transitions and other advanced effects provided by Mootools.

NOTE: The latest version of [RokNavMenu](#) is required, in order for Fusion to operate.
New Features

In Zephyr, Fusion Menu has been extended with the following features:

- Triple / Quad Column Mode
- Column Menu Grouping
- Column Width Control
- Load Modules inside Dropdowns
- Load Module Positions inside Dropdowns

Recurring Features

Below is a list of the standard, recurring features of the Fusion Menu:

- Single Column Mode
- Dual Column Mode
- Menu Item Subtext
- Menu Item Icons
- Javascript Controls

Editing Menu Items

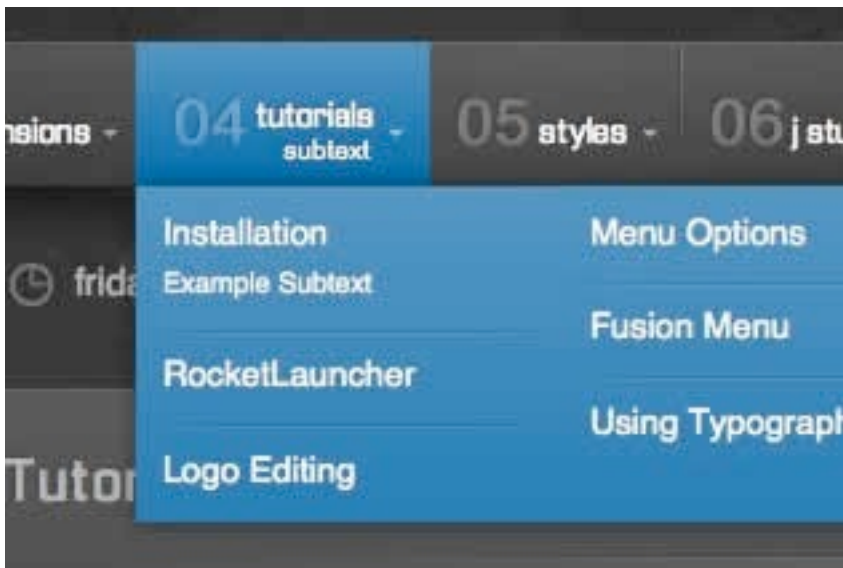
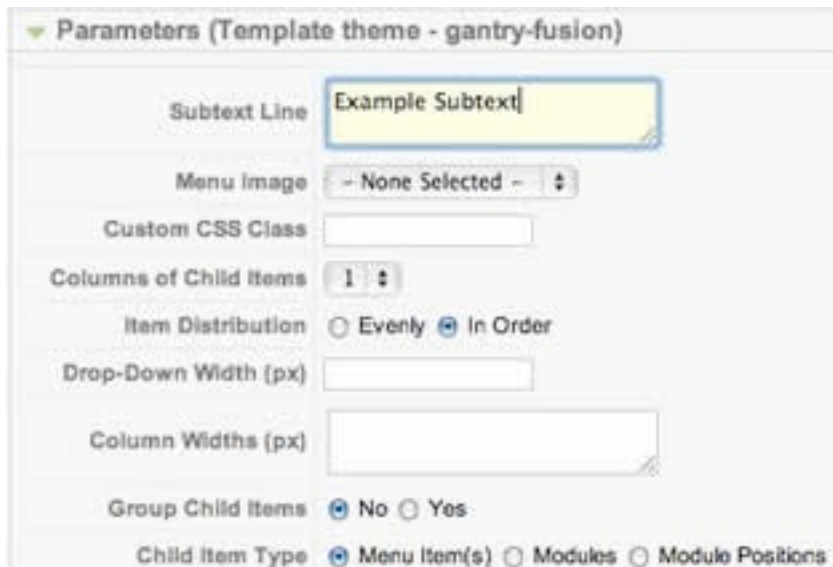
All Menu Items can be edited from **Admin** → **Menu** → **Menu Name** → **Menu Item**.

The screenshot displays the Joomla! Admin interface for editing a menu item. The top navigation bar shows the title "Menu Item: [Change]" and action buttons: Save, Apply, Close, and Help. The left sidebar contains the "Menu Item Type" section, which is set to "Article Layout", and the "Menu Item Details" section with the following fields: ID (201), Title (Fusion Menu), Alias (fusion-menu), Link (index.php?option=com_content&view=article), Display In (Main Menu), Parent Item (Top), Published (Yes), and Order (12). The main content area features a tabbed interface with the following tabs: "Parameters (Basic)", "Parameters (Component)", "Parameters (Template theme - gantry-fusion)", "Parameters (Template theme - gantry-splitmenu)", "Parameters (Template theme - gantry-suckerfish)", "Parameters (Extended Query Strings)", and "Parameters (System)". The "Parameters (Template theme - gantry-fusion)" tab is currently active, showing settings for Subtext Line, Menu Image (Use Default), Custom CSS Class, Columns of Child Items (1), Item Distribution (Evenly), Drop-Down Width (px), Column Widths (px), Group Child Items (No), and Child Item Type (Menu item(s)).

Basic Fusion Parameters

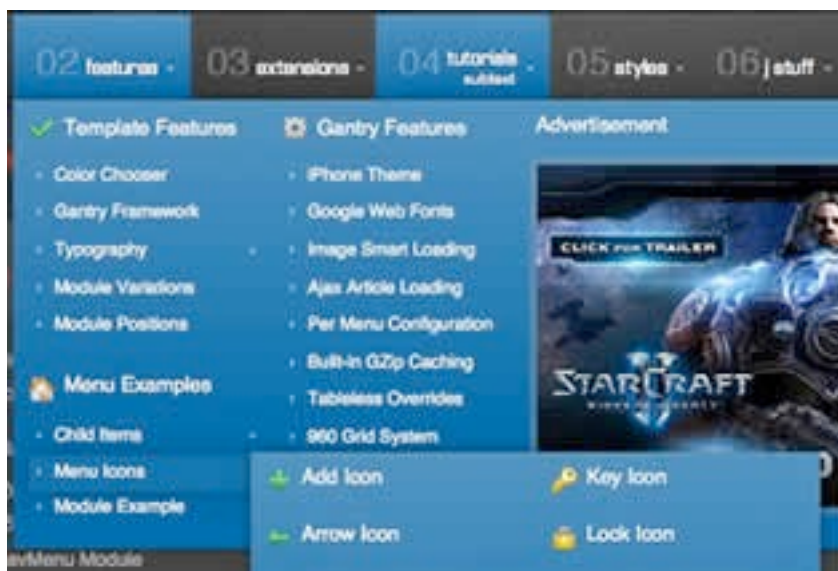
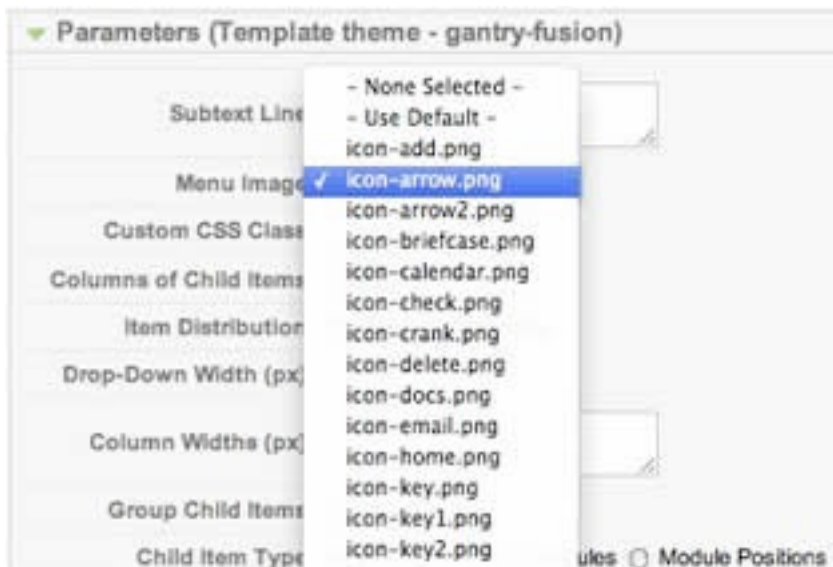
Adding Subtext

Subtext Line is the option that allows you to insert additional text to the **Menu Item Title**. There is separate styling for this, making it useful for adding brief descriptions to menu items.



Adding Menu Icons

Menu Image is the option that allows you to insert an inline icon / image to the **Menu Item**.



Advanced Fusion Parameters: Columns

Menu Columns

Columns of Child Items allows you to determine how many columns the **Fusion** dropdowns are presented in. You can have anywhere between a **single dropdown** to a **four column** dropdown.

Parameters (Template theme - gantry-fusion)

Subtext Line

Menu Image

Custom CSS Class

Columns of Child Items ☒ 1 ☐ 2 ☐ 3 ☐ 4

Item Distribution ☒ Evenly ☐ In Order

Drop-Down Width (px)

Column Widths (px)

Group Child Items ☒ No ☐ Yes

Child Item Type ☒ Menu Item(s) ☐ Modules ☐ Module Positions



Item Distribution

Item Distribution allows you to control how the menu items are ordered in the dropdowns:

- **Evenly:** If there are **7** menu items in **3** columns, Fusion will allocate a 3,2,2 distribution - trying to equalize each dropdown.
- **Order:** If there are **7** menu items in **3** columns, Fusion will allocate a 3,3,1 distribution - maintaining the item ordering.

NOTE: If your **Columns of Child Items** setting is configured to be 2 or more columns, you will need to manually set the column widths and distribution, as outlined below. The default is 180px which is too small for multiple columns.



Drop-Down Width (px)

Drop-Down Width (px) determines the total width of the dropdown, regardless of how many columns are shown. This option is to be used in conjunction with **Column Widths (px)**

Parameters (Template theme - gantry-fusion)

Subtext Line

Menu Image

Custom CSS Class

Columns of Child Items

Item Distribution ☒ Evenly ☐ In Order

Drop-Down Width (px)

Column Widths (px)

Group Child Items ☒ No ☐ Yes

Child Item Type ☒ Menu Item(s) ☐ Modules ☐ Module Positions



Column Widths (px)

Column Widths (px) determines the width of each Column. Separate each width by a comma. The final column's width is determined automatically. This option is to be used in conjunction with **Drop-Down Width (px)**

Below are some example configurations:

- **Drop-Down Width: 480px:** 160,160. Fusion automatically calculates the final width as **160**, so in practise, 160,160,160 is the actual distribution.
- **Drop-Down Width: 600px:** 160,160. Fusion automatically calculates the final width as **280**, so in practise, 160,160,280 is the actual distribution.

▼ Parameters (Template theme - gantry-fusion)

Subtext Line

Menu Image

Custom CSS Class

Columns of Child Items

Item Distribution ☒ Evenly ☐ In Order

Drop-Down Width (px)

Column Widths (px)

Group Child Items ☒ No ☐ Yes

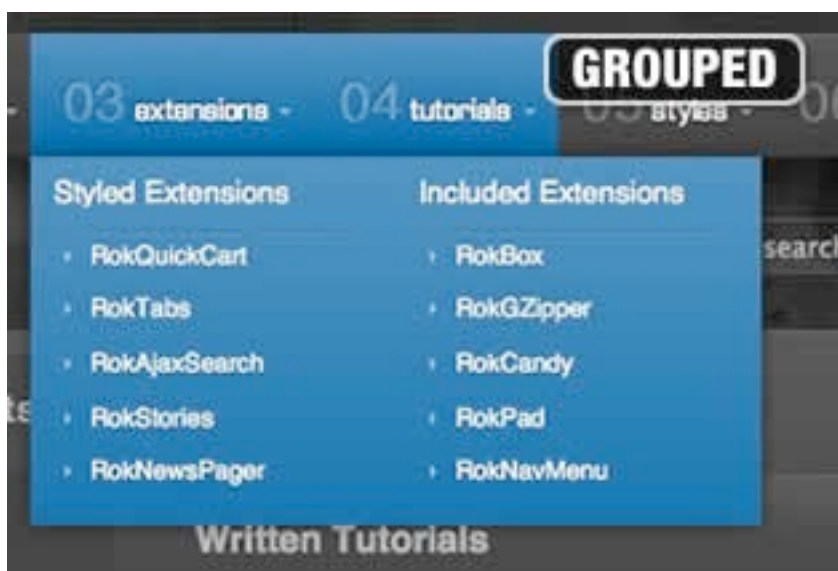
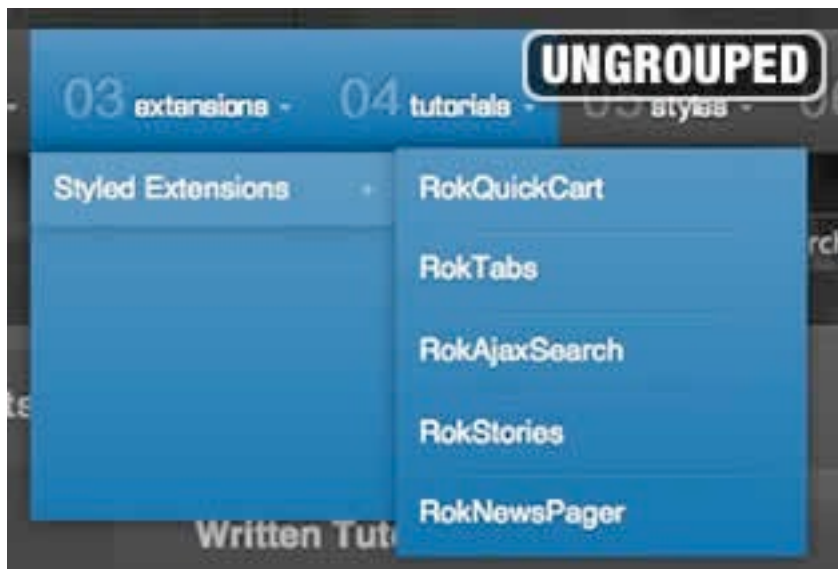
Child Item Type ☒ Menu Item(s) ☐ Modules ☐ Module Positions



Advanced Fusion Parameters: Groupings

What is Grouping?

Group Child Items changes the behaviour of child items in the dropdown menus, instead of creating a dropdown for the immediate sublevel, this option places them inline. See below for an illustrated example of the differences:



Configuration

NOTE: Grouping cannot be applied to **root** items, only **child** items.

Set **Group Child Items** to Yes to activate the mode. The sublevels will then appear below the parent menu item in a categorical type structure.

Parameters (Template theme - gantry-fusion)

ROOT ITEM

Subtext Line

Menu Image

Custom CSS Class

Columns of Child Items

Item Distribution ☒ Evenly ☐ In Order

Drop-Down Width (px)

Column Widths (px)

Group Child Items ☒ No ☐ Yes

Child Item Type ☒ Menu Item(s) ☐ Modules ☐ Module Positions

Subtext Line

CHILD ITEM

Menu Image

Custom CSS Class

Columns of Child Items

Item Distribution ☒ Evenly ☐ In Order

Drop-Down Width (px)

Column Widths (px)

Group Child Items ☐ No ☒ Yes

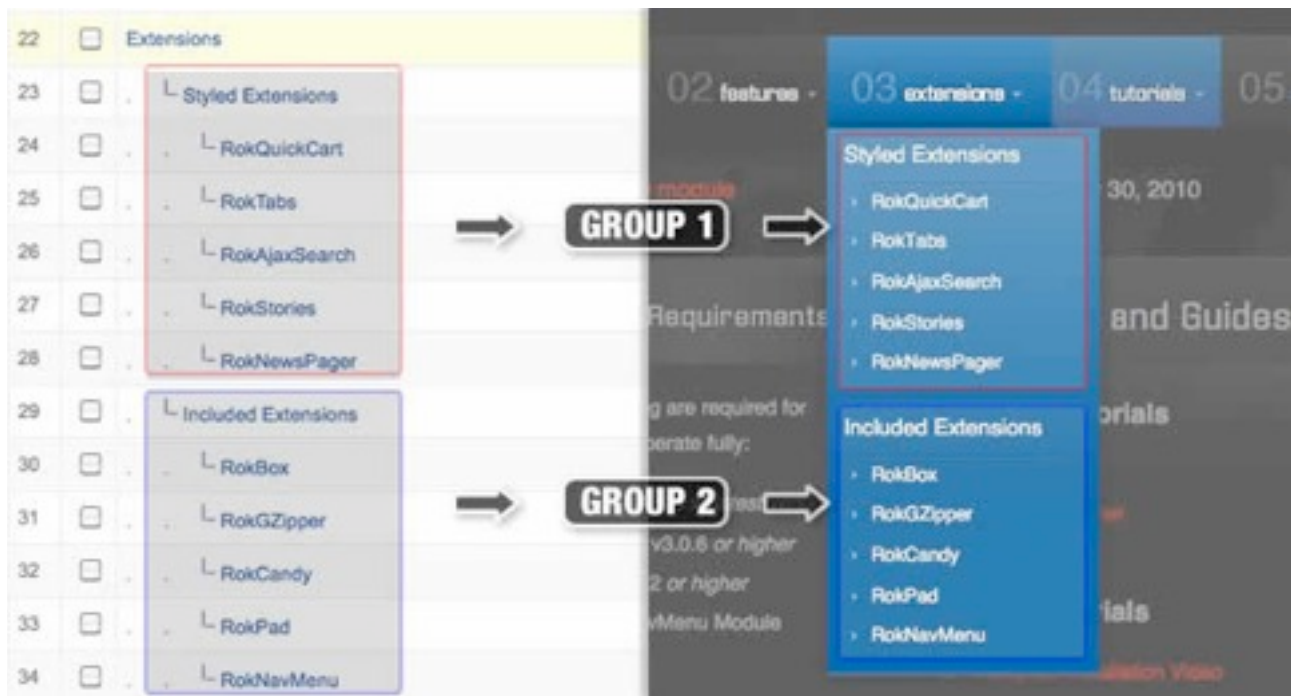
Child Item **Group Child Items**

Module Positions

Parameters (Template theme - gantry-fusion)

Select this to group children under menu item rather than treating as a submenu

Below is a diagram of how the menu groupings in Joomla translate into the Fusion Menu:



Advanced Fusion Parameters: Modules

Fusion is now capable of loading individual modules or entire module positions inside its dropdowns.

Loading Individual Modules

Set **Child Item Type** to **Modules** to load all modules setup on your Joomla site in a list. Select the module you wish to display in the dropdown.

Item Distribution ☒ Evenly ☐ In Order

Drop-Down Width (px)

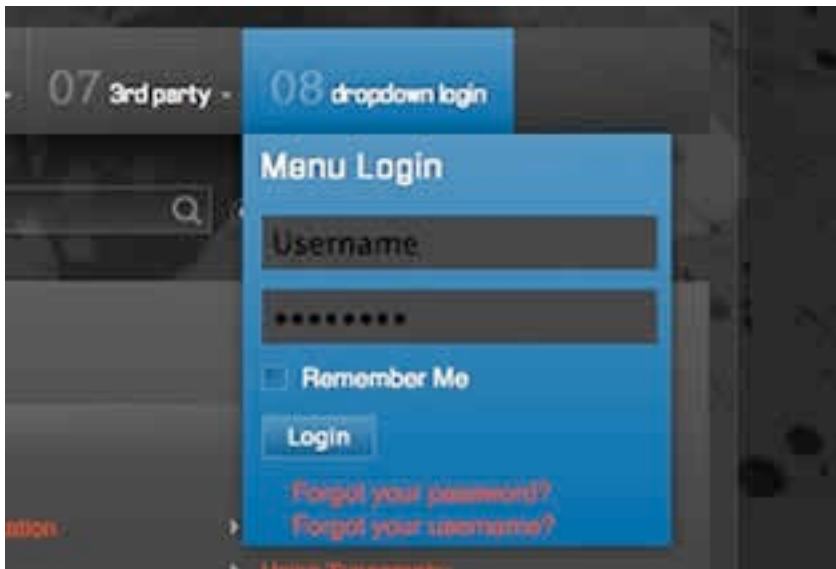
Column Widths (px)

Group Child Items ☒ No ☐ Yes

Child Item Type ☐ Menu Item(s) ☒ Modules ☐ Module Positions

Child Modules

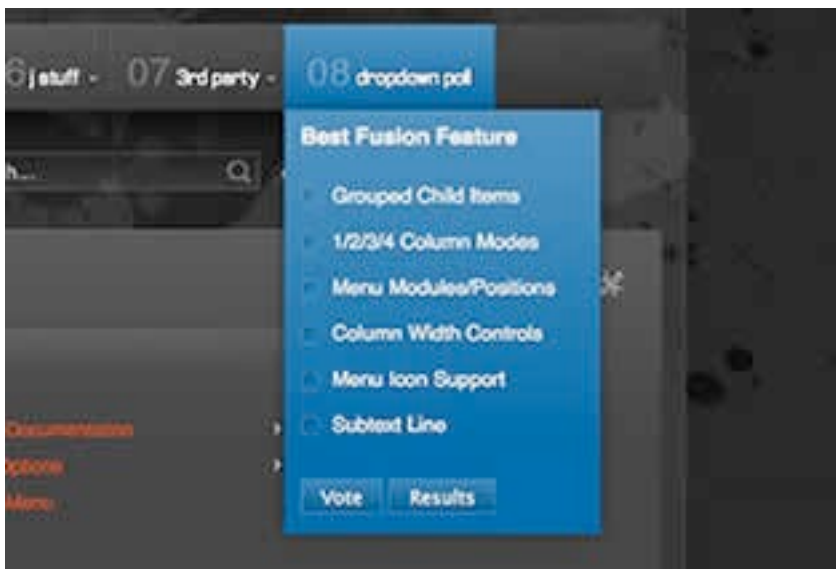
- K2 Content
- K2 Login
- K2 Tools
- K2 Users
- Latest Items
- Login Form
- Main Menu
- MainBottom A
- MainBottom B
- MainBottom C



Loading Module Positions

Set **Child Item Type** to **Modules Positions** to load all module positions on your Joomla site in a list. Select the position you wish to display in the dropdown.

A screenshot of the Joomla! administrator interface showing the configuration for a module. The 'Item Distribution' is set to 'Evenly'. The 'Drop-Down Width (px)' is set to '200'. The 'Column Widths (px)' is set to '200'. The 'Group Child Items' is set to 'No'. The 'Child Item Type' is set to 'Module Positions'. A dropdown menu is open, showing a list of module positions: maintop-d, maintop-e, maintop-f, menu, menu-login, menu-poll (highlighted), menu1, popup, showcase-a, and showcase-b.



Below is an example of multiple modules appearing in a dropdown:

Item Distribution ☒ Evenly ☐ In Order

Drop-Down Width (px)

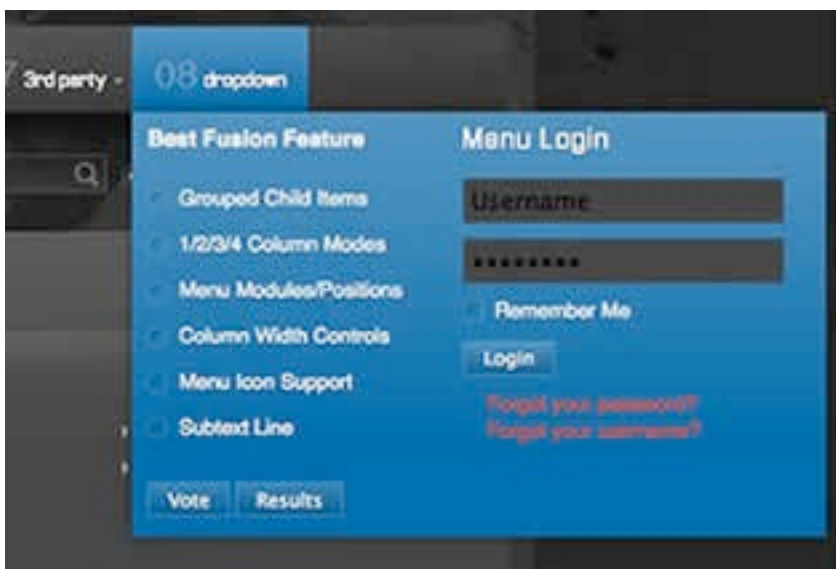
Column Widths (px)

Group Child Items ☒ No ☐ Yes

Child Item Type ☐ Menu Item(s) ☐ Modules ☒ Module Positions

Child Module Positions

- maintop-e
- maintop-f
- menu
- menu-poll
- menu1
- popup
- showcase-a
- showcase-b
- showcase-c
- showcase-d



Template Configuration: Fusion Menu

Go to **Extensions** → **Template Manager** → **rt_zephyr_j15** → **Menu Set Menu Control** to **Type** : **Fusion-Menu**, to load all the Fusion parameters.

Menu

MENU CONTROL

SHOW

ON

TYPE

Fusion-Menu

SELECT A MENU

mainmenu

POSITION

navigation

ENABLE JAVASCRIPT

ON

MENU OPACITY

1

MENU EFFECT

Slide + Fade

MENU DELAY

500

MENU ANIMATION

Circ.easeOut

MENU DURATION

400

PILL

Enable

OFF

Duration

400

Animation

Back.easeOut

CENTERED DROP-DOWNS

OFF

TWEAK INITIAL

X-Offset

-10

Y-Offset

-10

TWEAK SUBSEQUENT

X-Offset

-10

Y-Offset

-12

ENABLE ID

OFF